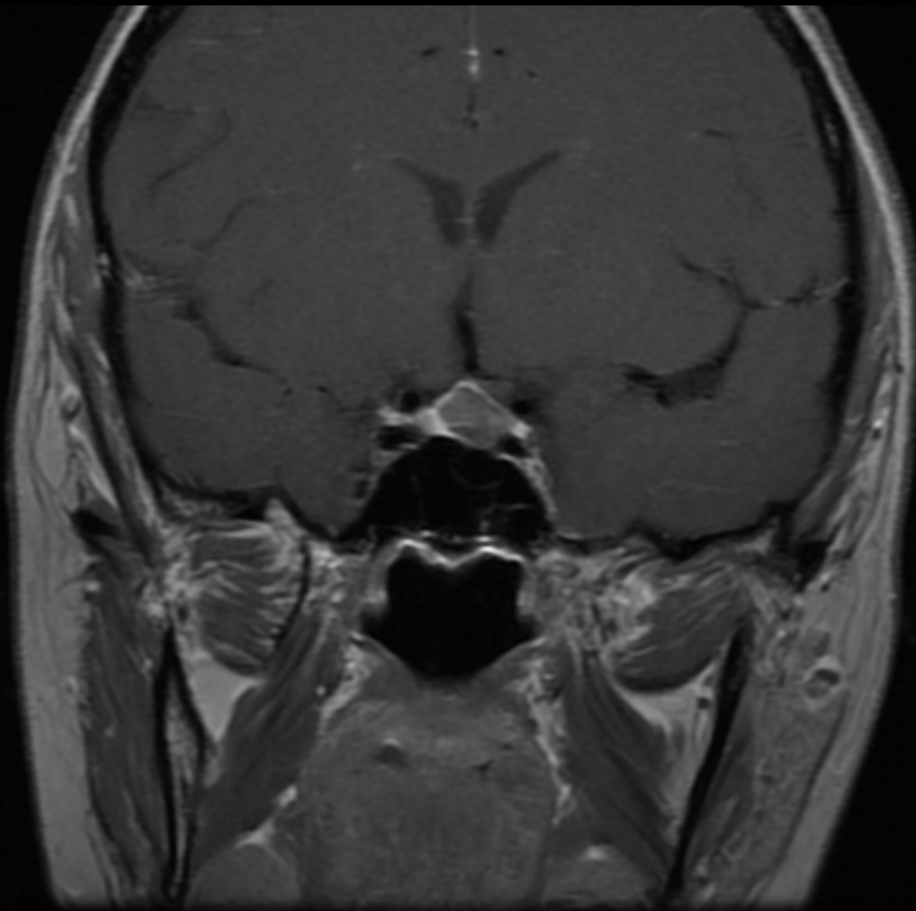


Pituitary adenomas

Microadenomas are defined as pituitary adenomas less than 10mm in diameter; they may secrete hormones but are often asymptomatic.

Macroadenomas tend to be symptomatic, both in terms of producing hormones but also compressing adjacent pituitary tissue causing hypopituitarism. In addition they may have effects on neighbouring structures such as invasion into the paranasal air sinuses anteriorly (causing head aches) and into the optic chiasma posteriorly causing bitemporal hemianopia.

MR scan showing
pituitary microadenoma



MR scan showing
pituitary macroadenoma

